



The Wildcat's Roar

DIPLOMAT MIDDLE SCHOOL

PROUD TO BE A POSITIVE - BEHAVIOR SUPPORT "PBS" - MODEL SCHOOL

CALENDAR OF EVENTS:

PLEASE RETURN THE FOLLOWING
INSTRUMENTS BACK TO SCHOOL:
BAND AND ORCHESTRA INSTRUMENTS
UKULELES
GUITARS

1: AFTER SCHOOL HELP 4:15 PM

3: PELICAN'S SNOWBALLS 4 PM

4: EOY CONCERT AND LUNCH CELEBRATION

8: AFTER SCHOOL HELP 4:15 PM

STUDENT ONLY AWARD PROGRAMS:
PARENTS CAN JOIN VIA ZOOM

10: 6TH GRADE AWARDS 10-11 AM

11: 7TH GRADE AWARDS 10-11 AM

14: 8TH GRADE AWARDS 10-11 AM

17: CHICK-FIL-A NIGHT

17: STUDENT'S LAST DAY

A MESSAGE FROM OUR PRINCIPAL

Hello Wildcats!

During this 2020-2021 school year we started moving back to normal, but remain cautious due to COVID-19. The vast majority of you are back in the school building with us and about 17% of you are still at home completing your schooling as Home Connect students. Although we are all still experiencing an abnormal lifestyle to different extents, you are walking through it all with confidence and determination. I am proud of you for that—you inspire me. Make sure you continue with your eye to the future. Stay focused on the most important parts of life... your health, your family's health, and your happiness. Working diligently on your school work will assist you in finding happiness throughout your lives. I wish you happiness as we move towards the end of the year and into your future.

Proud to be in the Pride,

Mrs. Bennington





The Cape Coral Police Department is hosting its 14th Annual Youth Academy this summer. This is a one week program that is offered twice during the summer.

Week 1: June 21st-25th

Week 2: June 28th-July 2nd

Seats are limited.

Requirements:

- Student must be entering 7th or 8th Grade in the Fall of 2021
- Have no in/out school suspension
- No more than 3 disciplinary referrals throughout the past year
- Teacher recommendation letter on school letterhead

Deadline for application: **ASAP**

Mail application to:

Cape Coral Police Department
1100 Cultural Park Blvd.

Cape Coral, FL 33990

Att: Anella Joy Nyack

Community Services Bureau

Youth Police Academy:

Learn about:

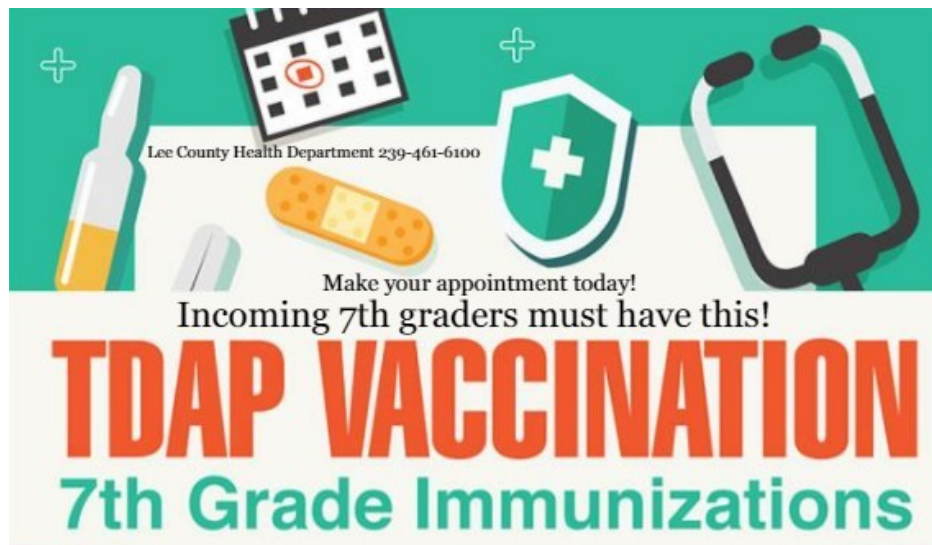
SWAT, K-9, Communication/Dispatch, Team Building Exercises, Bicycle/Pedestrian Safety, and much, much, more...



GRADE LEVEL REMINDERS

Students: Please make sure that you have made your selections for your elective classes. Current 6th and 7th graders sign up for the Google Classroom iesivtv to get access to the form.

SIXTH:



If you have not received the required Tdap shot to enter the 7th grade, please do so before school starts in the fall. Lee County Health Dept now accepts appointments only - no walk-ins. Please call them at 239-461-6100 to schedule and appointment or you can also visit your child's pediatrician. Remember, your child will NOT be permitted to enter the 7th grade without the required shots.

SEVENTH: PLEASE MAKE SURE YOU END THE YEAR WITH A'S AND B'S SO THAT YOU CAN ENJOY EATING OUTSIDE AT THE BEGINNING OF YOUR 8TH GRADE YEAR FOR AB LUNCH.

EIGHTH: IF YOU HAVE NOT SIGNED UP FOR YOUR 9TH GRADE ELECTIVES, SIGN INTO THE FRESHMAN GOOGLE CLASSROOMS FOR THE HIGH SCHOOL YOU WILL BE ATTENDING:

CAPE CORAL: VG4BXC4

IDA S. BAKER: I4ZM5XN

ISLAND COAST: HXGXF5I

MARINER: QSWYNDG

NORTH FORT MYERS: 2FFATYO

JOIN OUR MUSIC PROGRAM

10 REASONS TO JOIN BAND

**WE HAVE
LOTS OF FUN**

**WE DO FUN
FUNDRAISERS
AND FIELD
TRIPS**

**WE PERFORM AT
THE SCHOOL AND
IN THE COMMUNITY**

WE MAKE NEW FRIENDS IN BAND

**WE ALL SUPPORT
EACH OTHER**

**WE CAN BE CREATIVE AND EXPRESS
OURSELVES**

**WE DEVELOP LOTS OF SKILLS
FOR COLLEGE AND FOR LIFE**

**IF YOU JOIN BAND YOU
GET TO STAY WITH YOUR
FRIENDS ALL YEAR LONG**

YOU BECOME A PART OF A FAMILY!

A MESSAGE FROM YOUR BAND DIRECTOR

It is that time of year when we are getting ready to start new musicians in our band program. This is an important decision for you and your child. This is not a decision just about band, but rather a decision which will determine, in part, who your child's friends and associates will be.

Although many see band as a class for learning to play an instrument, it is much more than that. It is the development of a family of friends that lasts a lifetime. It is also the establishment of some rather profound environmental influences that will determine much of your child's success in all aspects of education, not just band.

We know that Band students represent the top of the academic scale in our schools. We know they are averaging 62 points higher on SAT tests, which would indicate they are stronger in verbal and math scores than most other members of the student body. We also know BAND students are some of the ones who enjoy a successful high school career and go on to college. For parents wishing their children to attend college it would be important to consider the following facts. The first two factors that the majority of admission directors consider are class rank and **SAT/ACT** scores. The third consideration is whether or not the student has been active in a fine arts elective through their secondary years. 60% of all college freshmen drop out after their first year as a collegiate. In contrast, 96% of students who have had 4 years of band as high school students earn diplomas from universities.

One of the most positive impressions you can offer your child is the gift of music and a chance to learn self-discipline at the highest level via participation in band. Their social skills, communication skills, self-concepts, cooperative talents and creative mind will be nurtured through the study of music. These life skills will serve as an important foundation as they take on various responsibilities in their future.

If you have any questions, please feel free to email Mark Dahlberg at Markld@leeschools.net



COMMUNITY PARTNERSHIPS

WAWA, Pine island Road East
Iguana Mia, Cape Coral Pkwy
SUPER TARGET, NE Pine
Island Road
7-Eleven, Andalusia /
Diplomat
Garden Club, of Cape Coral
Sam's Club, Pine Island Road
Bjs Wholesale, Pine Island
Road
Stuff A Bagel, Pine Island
Road / Skyline
Publix, Kismet and North Del
Prado

Pelican's, Hancock Bridge
Pkwy
Rosales Flowers, Cape Coral
Pkwy West
Chick-fil-a, Pine Island Road

**A big shout out to El Rio
Golf Course in NFM.
Thank you for all of the
course time and driving
range given to our
students during this golf
season. You definitely
went above and beyond!**

SCHOOL AND COMMUNITY

Diplomat Middle School would like to send out a BIG Wildcat thank you to all of our Community Partners. Your generosity allows us to reach educational goals. To say we couldn't have had a successful school year without you is an understatement. Thank you again for all that you continually do.

SUMMER ATHLETIC CLUB INFORMATION

To prepare for the upcoming Cross-Country and Track and Field seasons, consider signing-up with the below track clubs

(Please see websites for Start Dates):

ERYRC Track Club (Fort Myers/Estero); <http://www.eryrc.com/>

Olympia Track Club (Fort Myers); Search "Olympia Track Club Ft. Myers" on Facebook or Twitter

Fort Mvers Track Club (Fort Mvers);
<https://runsignup.com/Club/FL/FortMyers/FortMyersTrackClub?rsus=100-200-7b33019e-6e93-4750-b762-e2f14b737f6d>

Florida Thoroughbreds (Fort Myers/Naples); <https://www.floridathoroughbreds.com/>

IMPORTANT PARENT REMINDERS

Lee County School Board Policy 4.16:

No student shall be released within the final 30 minutes of the school day unless the principal/designee determines it is an emergency.

Being in school is important

It is important that our students are in school everyday and that they are on time for each class, including the beginning of the day. Just as students receive a detention during the day for being tardy to classes, students will also receive a detention on every third unexcused tardy to school. Therefore, every 3rd unexcused tardy will result in an after school detention.

Morning Open Gym- Parent Convenience If your morning schedule is tight, you may use our open gym for a small fee each school day. Students may come on campus at or after 9:15 am, without the need of our fee based care. Students who arrive before 9:15 am, become a part of our open gym at a cost to parents of \$35 for registration and \$5 per day that is attended.

Picking up your student

Student must be picked up at dismissal each day, 4:00 pm, or at the designated end time of any school sponsored event.

THE SCHOOL DISTRICT OF LEE COUNTY



MARY FISHER
District 1



MELISA GIOVANNELLI
District 2



DEBBIE JORDAN
District 3



DR. GREG ADKINS



Superintendent

CHRIS PATRICCA
District 4



GWYNETTA GITTENS
District 5



BETSY VAUGHN
District 6



The School Board of Lee County, Florida, prohibits discrimination on the basis of age, color, disability, gender, national origin, marital status, religion, and or sexual orientation.